



STAINLESS STEEL WALL MOUNTED SERVICE SINKS

12" Deep Bowl



WSS-14-21



WSS-16-25

Item #: _____ **Qty #:** _____

Model #: _____

Project #: _____

TUBULAR Wall Brackets

FEATURES:

Heavy Duty square design stainless steel.
Full 10" high backsplash.
Tubular stainless steel brackets for extra vertical support.
Stainless steel "Z" bracket.

CONSTRUCTION:

All TIG welded.
Welded areas blended to match adjacent surfaces and to a satin finish.
Die formed tubular wall bracket.

MECHANICAL:

Faucet holes are 8" O.C. (Faucet hole revisions available).
Faucets not included (See accessories).
Cast iron "P" trap not included (Supplied by others).
3-1/2" stainless steel basket drain.

WSS-14-21: Sink bowl is 18"L x 14"W x 12"D.

WSS-16-25: Sink bowl is 22"L x 16"W x 12"D.

MATERIAL:

All 16 gauge type 304 series stainless steel.
1-5/8" tubular stainless steel wall brackets.
Stainless steel gussets.



K-240



K-101



K-121



K-175



7-PS-32



7-PS-39

Accessories	Model #	Qty
Service Faucet	K-240	
8" Swing Spout Faucet	K-101	
Gooseneck Faucet	K-121	
Electronic Faucet	K-175	
Knee Valve Assembly	7-PS-32	
Foot Pedal Assembly	7-PS-39	

Standard Faucet conforms to NSF 61 Standard 9. An optional faucet upgrade is required for compliance to AB 1953 Standards.

For Replacement Faucets & Upgrades, Drains & Accessories visit our website at www.advancetabco.com



Customer Service Available To Assist You 1-800-645-3166 8:30 am - 8:00 pm E.S.T.

Email Orders To: customer@advancetabco.com. For Smart Fabrication™ Quotes, Email To: smartfab@advancetabco.com or Fax To: 631-586-2933

NEW YORK
Fax: (631) 242-6900

GEORGIA
Fax: (770) 775-5625

TEXAS
Fax: (972) 932-4795

NEVADA
Fax: (775) 972-1578

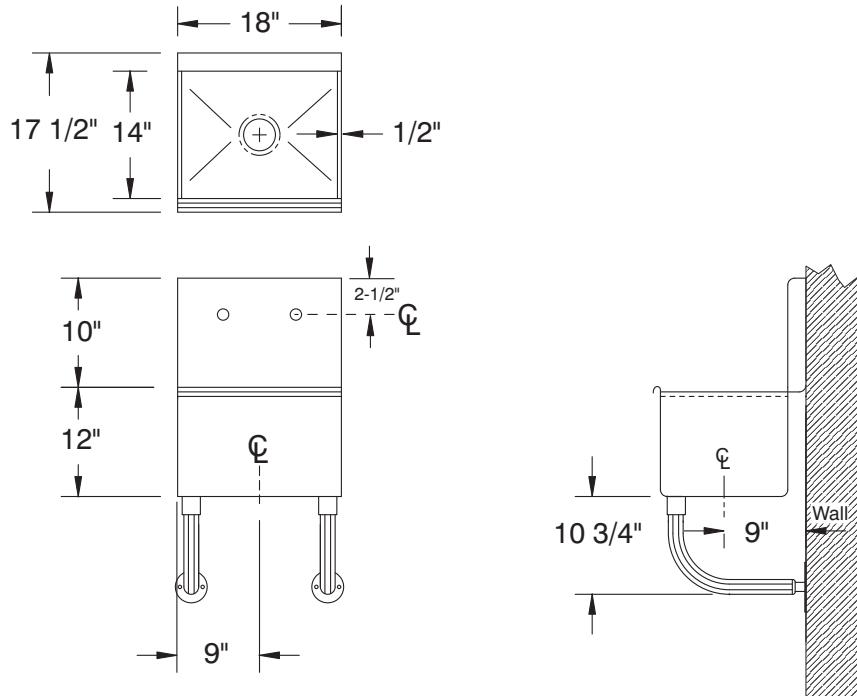
DIMENSIONS and SPECIFICATIONS

TOL $\pm .500"$

FITTINGS SUPPLIED AS SHOWN

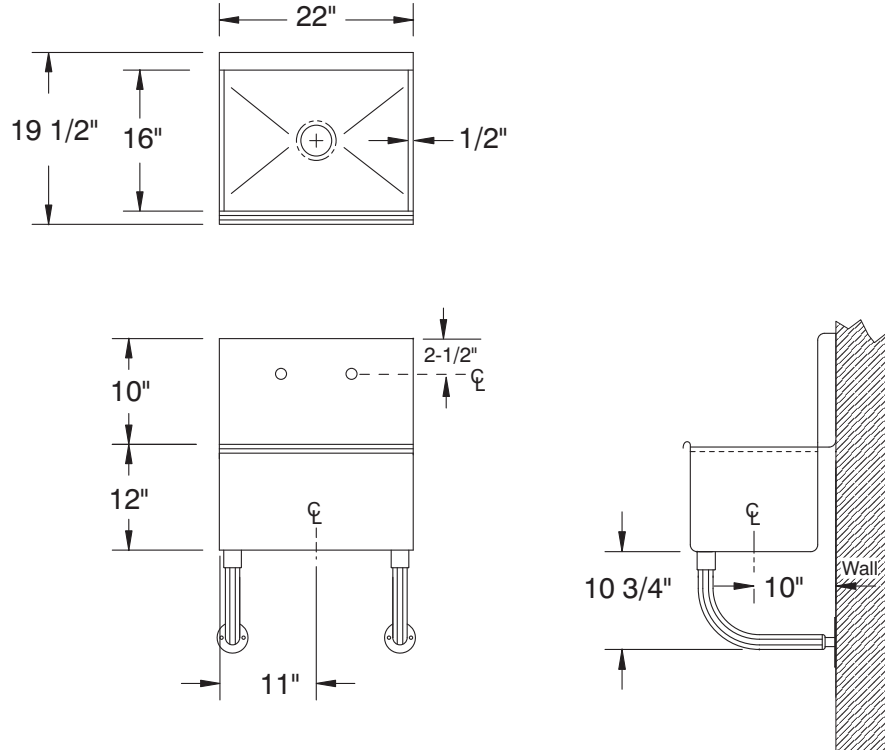
ALL DIMENSIONS ARE TYPICAL

WSS-14-21



45 lbs.

WSS-16-25



52 lbs.

