



STAINLESS STEEL  
**HAND SINKS**  
**A.D.A COMPLIANT LAVATORIES**



**7-PS-25**



**7-PS-75**



**7-PS-26**

**FRONT LOADING  
 PAPER TOWEL DISPENSER UNIT**



**7-PS-41**

**Item #:** \_\_\_\_\_ **Qty #:** \_\_\_\_\_

**Model #:** \_\_\_\_\_

**Project #:** \_\_\_\_\_

**FEATURES:**

One piece **Deep Drawn** sink bowl design.

Sink bowl is 16" x 14" x 5".

All sink bowls have a large liberal radii with a minimum dimension of 2" and are rectangular in design for increased capacity.

Keyhole wall mount bracket.

1 1/2" stainless steel drain with strainer plate.

**Additional Specific Features:**

**7-PS-25** 6" Extended deck mounted gooseneck faucet with wrist handles & deck mounted, liquid soap dispenser.

**7-PS-26** includes a "Hands Free" AC/DC operated gooseneck faucet & deck mounted, liquid soap dispenser.

**7-PS-75** Sink Only. Faucet not included. Three 1-3/8" dia. Holes Punched.

**7-PS-41** includes a "Hands Free" AC/DC operated gooseneck faucet & deck mounted, liquid soap dispenser.

Front loading paper towel dispenser (Standard C-Fold Towels).

Stainless Steel Skirt with Removable Access Panel and enclosed bottom for storage. Optional **TA-14** lock available.

**CONSTRUCTION:**

All TIG welded.

Welded areas blended to match adjacent surfaces and to a satin finish.

Die formed Countertop Edge with a 3/8" No-Drip offset.

Bowl made from One sheet of stainless steel - No Seams.

**MATERIAL:**

Heavy gauge type 304 series stainless steel.

Wall mounting bracket is Galvanized and of offset design.

All fittings are brass / chrome plated unless otherwise indicated.

**MECHANICAL:**

Faucet supply is 1/2" IPS male thread hot and cold.



**Optional A.D.A. Compliant Bubbler can be added to the 7-PS-25, 7-PS-26 & 7-PS-75 Only**  
**Use Model # K-47**

**Standard Faucet conforms to NSF 61 Standard 9. An optional faucet upgrade is required for compliance to AB 1953 Standards.**

For Replacement Faucets & Upgrades, Drains & Accessories visit our website at [www.advancetabco.com](http://www.advancetabco.com)



**Customer Service Available To Assist You 1-800-645-3166 8:30 am - 8:00 pm E.S.T.**

Email Orders To: [customer@advancetabco.com](mailto:customer@advancetabco.com). For Smart Fabrication™ Quotes, Email To: [smartfab@advancetabco.com](mailto:smartfab@advancetabco.com) or Fax To: 631-586-2933

**NEW YORK**  
 Fax: (631) 242-6900

**GEORGIA**  
 Fax: (770) 775-5625

**TEXAS**  
 Fax: (972) 932-4795

**NEVADA**  
 Fax: (775) 972-1578

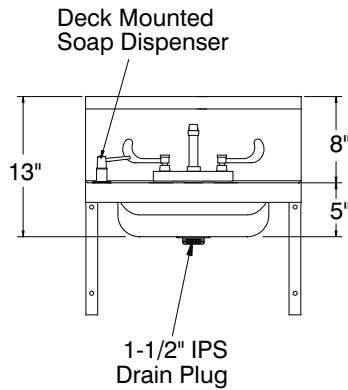
# DIMENSIONS and SPECIFICATIONS

TOL Overall:  $\pm .500"$  Interior:  $\pm .250"$

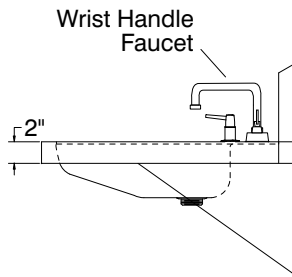
FITTINGS SUPPLIED AS SHOWN

ALL DIMENSIONS ARE TYPICAL

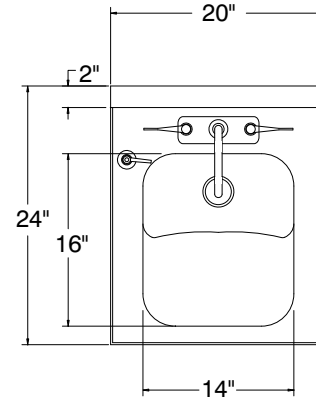
## 7-PS-25



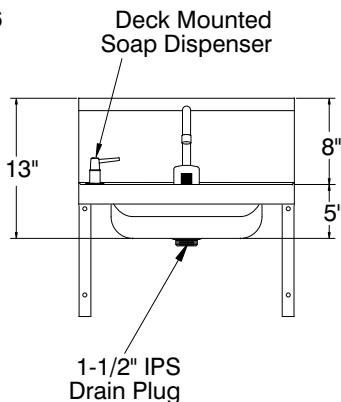
25 lbs.



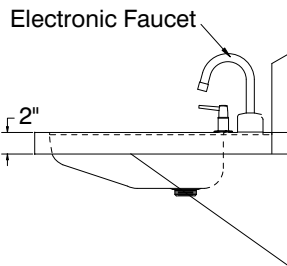
## TOP VIEW



## 7-PS-26

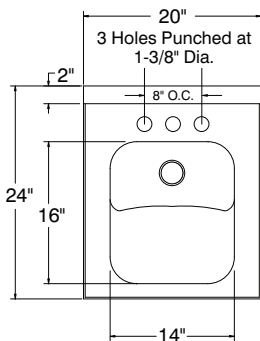


25 lbs.



CENTER FAUCET HOLE ONLY  
FOR 7-PS-26

## 7-PS-75



25 lbs.

## Optional 8" O.C. Faucets Available

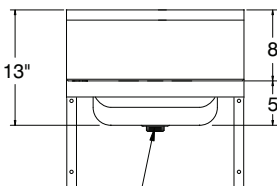


Heavy Duty  
5-1/2" Gooseneck



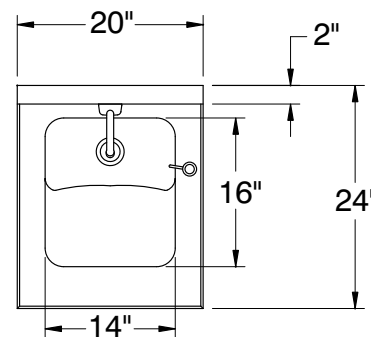
Heavy Duty  
9" Swing Spout

K-133

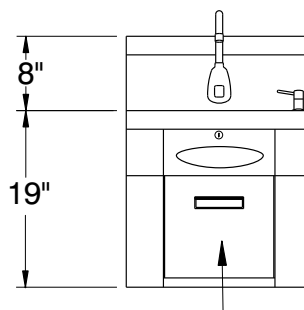


1-1/2" IPS  
Drain Plug

## 7-PS-41



43 lbs.



Removable Access Panel

