



STAINLESS STEEL

# WORK TABLES

## SPEC-LINE Series - 10" Backsplash - Open Base Style



Item #: \_\_\_\_\_ Qty #: \_\_\_\_\_  
 Model #: \_\_\_\_\_  
 Project #: \_\_\_\_\_

### FEATURES:

Top is furnished with a 2" x 1" square die embossed NO-DRIP countertop edge with a 1/2" return on 3 sides and a 10" splash of with a 2" return on the rear side.

24" wide tables supplied with TWO hat channels stud welded to reinforce and maintain a level working surface. 30" and 36" wide tables supplied with THREE hat channels.

Pre-engineered welded angle adapters insure ease of future drawer installation.

Front to back Stretchers are welded to legs. Left to right Stretcher bolted to legs and requires assembly.

### CONSTRUCTION:

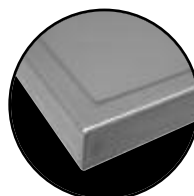
All TIG welded. Exposed weld areas polished to match adjacent surfaces.

Entire top mechanically polished to a satin finish. Countertop edge polished to a MIRROR finish.

Top is sound deadened.

Roll formed embossed galvanized hat channels are secured to top by means of structural adhesive and weld studs.

Gussets welded to support hat sections.



No-Drip DIE FORMED EDGE offers the Ultimate in Design & Function.



1-5/8" LEG STRETCHERS Ensure Stability

### MATERIAL:

#### TVKS-SERIES: Stainless Steel Legs - Open Base

**TOP:** 14 gauge stainless steel type "304" series.

**STRETCHERS:** 1 5/8" dia. tubular stainless steel.

**LEGS:** 1 5/8" diameter tubular stainless steel type "304" series.

1" adjustable stainless steel bullet feet.  
 Stainless steel gussets.

#### TVKG-SERIES: Galvanized Legs - Open Base

**TOP:** 14 gauge stainless steel type "304" series.

**STRETCHERS:** 1 5/8" dia. tubular galvanized steel.

**LEGS:** 1 5/8" diameter tubular galvanized steel.

1" adjustable plastic bullet feet.  
 Galvanized steel gussets.

### TVKS-Series: Stainless Steel Legs & Stretchers

L	24" Wide	30" Wide	36" Wide
30"	TVKS-240	TVKS-300	
24"	TVKS-242	TVKS-302	
36"	TVKS-243	TVKS-303	TVKS-363
48"	TVKS-244	TVKS-304	TVKS-364
60"	TVKS-245	TVKS-305	TVKS-365
72"	TVKS-246	TVKS-306	TVKS-366
84"	TVKS-247	TVKS-307	TVKS-367
96"	TVKS-248	TVKS-308	TVKS-368
108"	TVKS-249	TVKS-309	TVKS-369
120"	TVKS-2410	TVKS-3010	TVKS-3610
132"	TVKS-2411	TVKS-3011	TVKS-3611
144"	TVKS-2412	TVKS-3012	TVKS-3612



### TVKG-Series: Galvanized Steel Legs & Stretchers

L	24" Wide	30" Wide	36" Wide
30"	TVKG-240	TVKG-300	
24"	TVKG-242	TVKG-302	
36"	TVKG-243	TVKG-303	TVKG-363
48"	TVKG-244	TVKG-304	TVKG-364
60"	TVKG-245	TVKG-305	TVKG-365
72"	TVKG-246	TVKG-306	TVKG-366
84"	TVKG-247	TVKG-307	TVKG-367
96"	TVKG-248	TVKG-308	TVKG-368
108"	TVKG-249	TVKG-309	TVKG-369
120"	TVKG-2410	TVKG-3010	TVKG-3610
132"	TVKG-2411	TVKG-3011	TVKG-3611
144"	TVKG-2412	TVKG-3012	TVKG-3612

Create Your Own Efficient Workstation with the Available Standard Accessories (Visit Section K)



Customer Service Available To Assist You 1-800-645-3166 8:30 am - 8:00 pm E.S.T.

Email Orders To: customer@advancetabco.com. For Smart Fabrication™ Quotes, Email To: smartfab@advancetabco.com or Fax To: 631-586-2933

**NEW YORK**  
 Fax: (631) 242-6900

**GEORGIA**  
 Fax: (770) 775-5625

**TEXAS**  
 Fax: (972) 932-4795

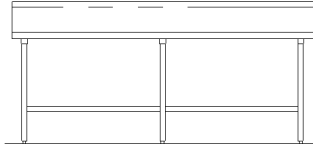
**NEVADA**  
 Fax: (775) 972-1578

# DETAILS and SPECIFICATIONS

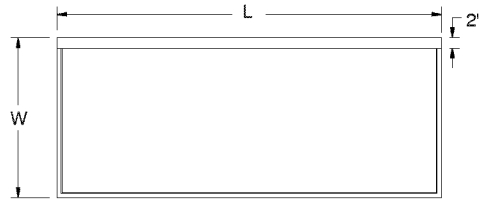
ALL DIMENSIONS ARE TYPICAL TOL ± .500"

All Units Shipped Unassembled (KD) for Reduced Shipping Costs.

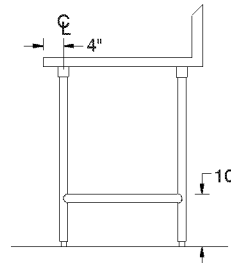
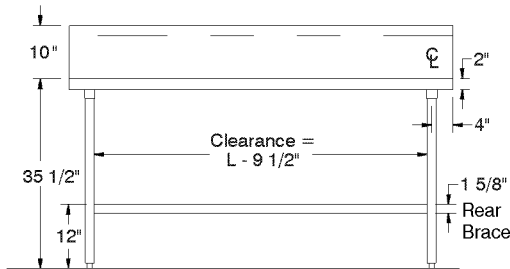
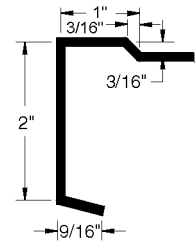
## TVKS & TVKG Series Open Base Style 10" Backsplash



Units 8ft. and larger are furnished with six (6) legs



### COUNTERTOP EDGE DETAIL



### TVKS-Series: Stainless Steel Legs & Stretches

L	24" Wide	Wt.	30" Wide	Wt.	36" Wide	Wt.
30"	TVKS-240	49 lbs.	TVKS-300	55 lbs.		
24"	TVKS-242	43 lbs.	TVKS-302	48 lbs.		
36"	TVKS-243	55 lbs.	TVKS-303	62 lbs.	TVKS-363	80 lbs.
48"	TVKS-244	67 lbs.	TVKS-304	75 lbs.	TVKS-364	85 lbs.
60"	TVKS-245	77 lbs.	TVKS-305	89 lbs.	TVKS-365	99 lbs.
72"	TVKS-246	89 lbs.	TVKS-306	97 lbs.	TVKS-366	112 lbs.
84"	TVKS-247	107 lbs.	TVKS-307	118 lbs.	TVKS-367	131 lbs.
96"	TVKS-248	119 lbs.	TVKS-308	131 lbs.	TVKS-368	145 lbs.
108"	TVKS-249	135 lbs.	TVKS-309	150 lbs.	TVKS-369	165 lbs.
120"	TVKS-2410	234 lbs.	TVKS-3010	249 lbs.	TVKS-3610	268 lbs.
132"	TVKS-2411	258 lbs.	TVKS-3011	276 lbs.	TVKS-3611	298 lbs.
144"	TVKS-2412	273 lbs.	TVKS-3012	291 lbs.	TVKS-3612	313 lbs.

### TVKG-Series: Galvanized Steel Legs & Stretches

L	24" Wide	Wt.	30" Wide	Wt.	36" Wide	Wt.
30"	TVKG-240	49 lbs.	TVKG-300	55 lbs.		
24"	TVKG-242	43 lbs.	TVKG-302	48 lbs.		
36"	TVKG-243	55 lbs.	TVKG-303	62 lbs.	TVKG-363	80 lbs.
48"	TVKG-244	67 lbs.	TVKG-304	75 lbs.	TVKG-364	85 lbs.
60"	TVKG-245	77 lbs.	TVKG-305	89 lbs.	TVKG-365	99 lbs.
72"	TVKG-246	89 lbs.	TVKG-306	97 lbs.	TVKG-366	112 lbs.
84"	TVKG-247	107 lbs.	TVKG-307	118 lbs.	TVKG-367	131 lbs.
96"	TVKG-248	119 lbs.	TVKG-308	131 lbs.	TVKG-368	145 lbs.
108"	TVKG-249	135 lbs.	TVKG-309	150 lbs.	TVKG-369	165 lbs.
120"	TVKG-2410	234 lbs.	TVKG-3010	249 lbs.	TVKG-3610	268 lbs.
132"	TVKG-2411	258 lbs.	TVKG-3011	276 lbs.	TVKG-3611	298 lbs.
144"	TVKG-2412	273 lbs.	TVKG-3012	291 lbs.	TVKG-3612	313 lbs.

