

Seeing Is Believing



See
Content
Levels &
Never Run
Out!



Eco-Air[®] Sight Glass



Now you see it, now you don't with our Eco-Air[®] Sight Glass Airpot. **Never run out of coffee again** — keeping you, and your customers, happy.

ECAL22SG - \$67.00
2.2 LITER (74.4 OZ) GLASS LINED
6 X 8 X 15.25

P LID (REG & DECAF, PUMP & LEVER), SUCTION PIPE, SIGHT GLASS, LINER

Steelvac[™] Sight Glass



The Steelvac[™] Sight Glass Airpot is our only stainless sight glass option, and boasts an extra shell for **superior dent protection.**

SSA300SG - \$147.60
3.0 LITER (101.4 OZ) STAINLESS LINED
7.25 X 9.25 X 15

P LID (REG & DECAF, PUMP & LEVER), SUCTION PIPE, SIGHT GLASS

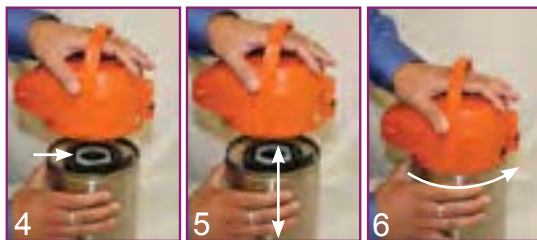
CTAL AIRPOT LID/COLLAR SWITCH



1 Locate the black button near the back of the airpot.

2 Place your hand under the handle (like shown) and use your other hand to push the black button in.

3 Secure the airpot with one hand while you use the hand holding the lid to turn the lid counter clockwise (like shown).



4 Lift the lid and collar from the base of the airpot. Be sure that the rubber gasket remains on the base of the airpot before you switch lids.

5 To replace lid/collar, line up the handle on the new lid with the button on the base of the airpot (as shown in photo 5).

6 Press down and turn lid counterclockwise until you hear a "click" as the button secures onto the lid/collar.



Color Me SVAC Airpot



Colorize your coffee service with our Color Me SVAC. Features a push button lock to switch out the lid & collar for easy color changes or replacements.

CTAL22 - \$88.85
2.2 LITER (74.4 OZ)
6.75 X 8.75 X 11.5

CTAL25 - \$91.80
2.5 LITER (84.5 OZ)
6.75 X 8.75 X 12.5

CTAL30 - \$96.75
3.0 LITER (101.4 OZ)
6.75 X 8.75 X 13.25

CTAL37 - \$104.30
3.7 LITER (125 OZ)
6.75 X 8.75 X 15

P LID (LEVER, INCLUDES COLLAR), SUCTION PIPE