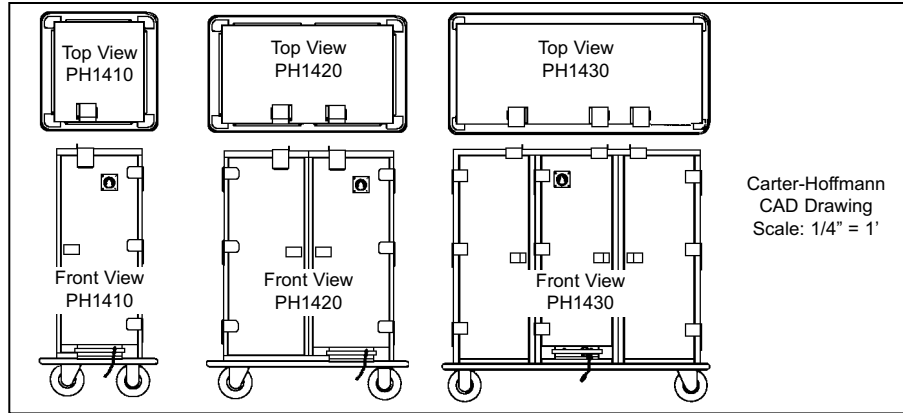




# PH1410, PH1420 & PH1430 HEAVY-DUTY HEATED TRANSPORT CARTS

(bottom mounted heating system)  
Correctional for Compartment Trays



Model Number	Tray Capacity*		Slide Pairs Standard	Inside Working Height		Overall Dimensions						Caster Diameter		Shipping Weight	
	10"x14"	14"x18" or 12"x20"		in	mm	Height		Depth		Width		in	mm	lbs	kgs
						in	mm	in	mm	in	mm				
<input type="checkbox"/> PH1410	30	15	15	49	1245	61 <sup>7</sup> / <sub>8</sub>	1572	29 <sup>1</sup> / <sub>2</sub>	749	30 <sup>5</sup> / <sub>8</sub>	778	8	203	220	98
<input type="checkbox"/> PH1420	60	30	30	49	1245	61 <sup>7</sup> / <sub>8</sub>	1572	29 <sup>1</sup> / <sub>2</sub>	749	50 <sup>1</sup> / <sub>2</sub>	1283	8	203	479	217
<input type="checkbox"/> PH1430	90	45	45	49	1245	61 <sup>7</sup> / <sub>8</sub>	1572	29 <sup>1</sup> / <sub>2</sub>	749	70 <sup>3</sup> / <sub>8</sub>	1788	8	203	759	344

\* Tray slides fixed on 3" centers. TRAY SAMPLE REQUIRED WITH ORDER.

**CONSTRUCTION...** Completely welded cabinet construction and top corners, with outer cabinet formed to base and welded. All seams turned in to eliminate raw edges. Exposed fasteners are tamper-resistant.

**CABINET MATERIAL...** All stainless steel construction; 16 gauge polished exterior and 20 gauge interior.

**BASE FRAME...** 12 gauge stainless steel full depth bolsters with 1"x1" 16 gauge stainless steel perimeter tube supports welded to bolsters.

**CASTERS...** 8" diameter, industrial grade caster with polyurethane tread. Sealed roller bearing and double ball bearing swivel. Zerk grease fittings. Plated mounted and bolted to base in offset wheel-ahead pattern. All swivel on PH140; two swivel & two rigid on PH1420 & PH1430. Two casters fitted with brakes.

**BUMPER...** Non-marking gray vinyl bumper set in heavy-duty 3/16" thick extruded aluminum frame with reinforced corner cutouts. Reinforced with 12 gauge angle brackets welded to cart and bolted through bumper.

**INSULATION...** High density fiberglass, full 1" thick continuous wrap-around type fiberglass insulation in sides, bottom, top and doors.

**DOORS...** Non-removable, flush mounted design. Welded double panel stainless steel; 16 gauge polished exterior and 20 gauge interior. Filled with 1" thick high density fiberglass insulation. 270 degree door swing (except center door on PH1430).

**HINGES...** 12 gauge stainless steel butt style hinges with 3/8" diameter stainless steel rod pins, fully welded and bolted to cabinet and doors.

**LATCHES...** Flush mounted heavy-duty slide latch for positive door closure. Flip-down transport latch(es) with padlock hasp.

**HANDLES...** Two 1" diameter stainless steel tubular handles, recessed in cabinet.

**TRAY RACK ASSEMBLIES...** 18 gauge stainless steel tray racks with welded stainless steel angle slides, secured in place with tamper-resistant hold down device. Standard spacing at 3". Removable with tools.

**THERMOMETER...** Dial type with remote sensing bulb and protective cover.

**HEATING SYSTEM...** Bottom mounted heater secured in place with hold-down strap and tamper-resistant fasteners. Entire unit removable with tools. Inconel-sheathed heating element. High impedance protected, internally cooled fan motor. Full range thermostat concealed for tamper resistance. Power indicating light.

**ELECTRICAL CHARACTERISTICS...** PH1410 & PH1420 operate on 120 volts, 60 cycle, single phase 1600 watts, 13.7 amps. PH1430 operates on 120 volts, 50/60 cycle, single phase, 2200 watts, 18.3 amps. Ten foot 3 wire rubber cord with 3 prong grounding plug. NEMA 5-15P on PH1410 & PH1420; NEMA 5-20P on PH1430.

**PERFORMANCE...** Capable of heating to 200° F (94° C). Preheat to 160° F (71° C) in approximately 25 minutes.

**ACCESSORIES/OPTIONS...**

- Locking Door Latch
- Alternate Caster Sizes and Types
- Menu Card Holder
- Alternate Electrical Configurations

Specifications subject to change through product improvement & innovation.



NSF/ANSI 4

**CARTER-HOFFMANN**  
1551 McCormick Ave., Mundelein, IL 60060  
(847) 362-5500 • (800) 323-9793 • Fax (847) 367-8981  
[www.carter-hoffmann.com](http://www.carter-hoffmann.com)

Suburban Bowery

CARTER-HOFFMANN  
FOOD SERVICE EQUIPMENT  
HEATED TRANSPORT CARTS

# SPECIFICATIONS

Printed in U.S.A. G30 0114  
Carter-Hoffmann is a trademark  
of Carter-Hoffmann LLC

# FEATURES & BENEFITS

## PH1410, PH1420 & PH1430 HEAVY-DUTY HEATED TRANSPORT CARTS

*Since 1947, foodservice equipment that delivers!*

### COMPLETELY WELDED TURNED-IN SEAM CONSTRUCTION...

Adds rigidity to entire cabinet and eliminates raw edges for easy cleaning and safety.

### FLUSH MOUNTED SLIDING DOOR LATCH...

Exclusively designed for transport applications. Door remains closed during transport. Flush design protects latch from damage.

### HEAVY-DUTY CASTERS WITH SEALED ROLLER BEARING...

Long lasting, easy rolling for maximum load and minimum maintenance.



PH1420

### TOP-MOUNTED TRANSPORT LATCHES...

Heavy duty 12 gauge stainless steel with padlock hasp for maximum security. One latch per door.

### RECESSED DOOR...Flush mounted design protects door and hinges from damage during transport.

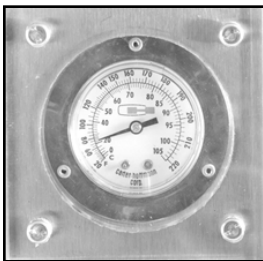
### HEAVY-DUTY HINGES...

Stainless steel hinges welded and bolted to cabinet for durable long life. 270 degree door swing protects door from damage.

### HEAVY-DUTY STAINLESS STEEL BASE FRAME...

12 gauge caster boosters with tubular perimeter frame to withstand heavy loads and harsh transport conditions.

**BOTTOM MOUNTED HEATER...** Blower heating system for fast heat up, recovery and even heat distribution throughout cabinet. Removable with tools for maintenance and cleaning.



### THERMOMETER WITH LEXAN COVER...

Allows convenient and accurate temperature monitoring while discouraging tampering. Mounted with tamper-resistant fasteners.



### OFFSET "WHEEL AHEAD" PATTERN...

Only one wheel can pass over uneven surfaces at a time for easy handling and steering.



### HEAVY-DUTY NON-MARKING BUMPER SET IN 3/16" THICK EXTRUDED ALUMINUM FRAME WITH STAINLESS STEEL REINFORCEMENTS...

Stands up to severe use and protects doorways, walls and cart from damage.

1551 McCormick Avenue, Mundelein, Illinois 60060  
Tel. (847)362-5500 • (800)323-9793 • Fax (847)367-8981  
www.carter-hoffmann.com



NSF/ANSI 4

